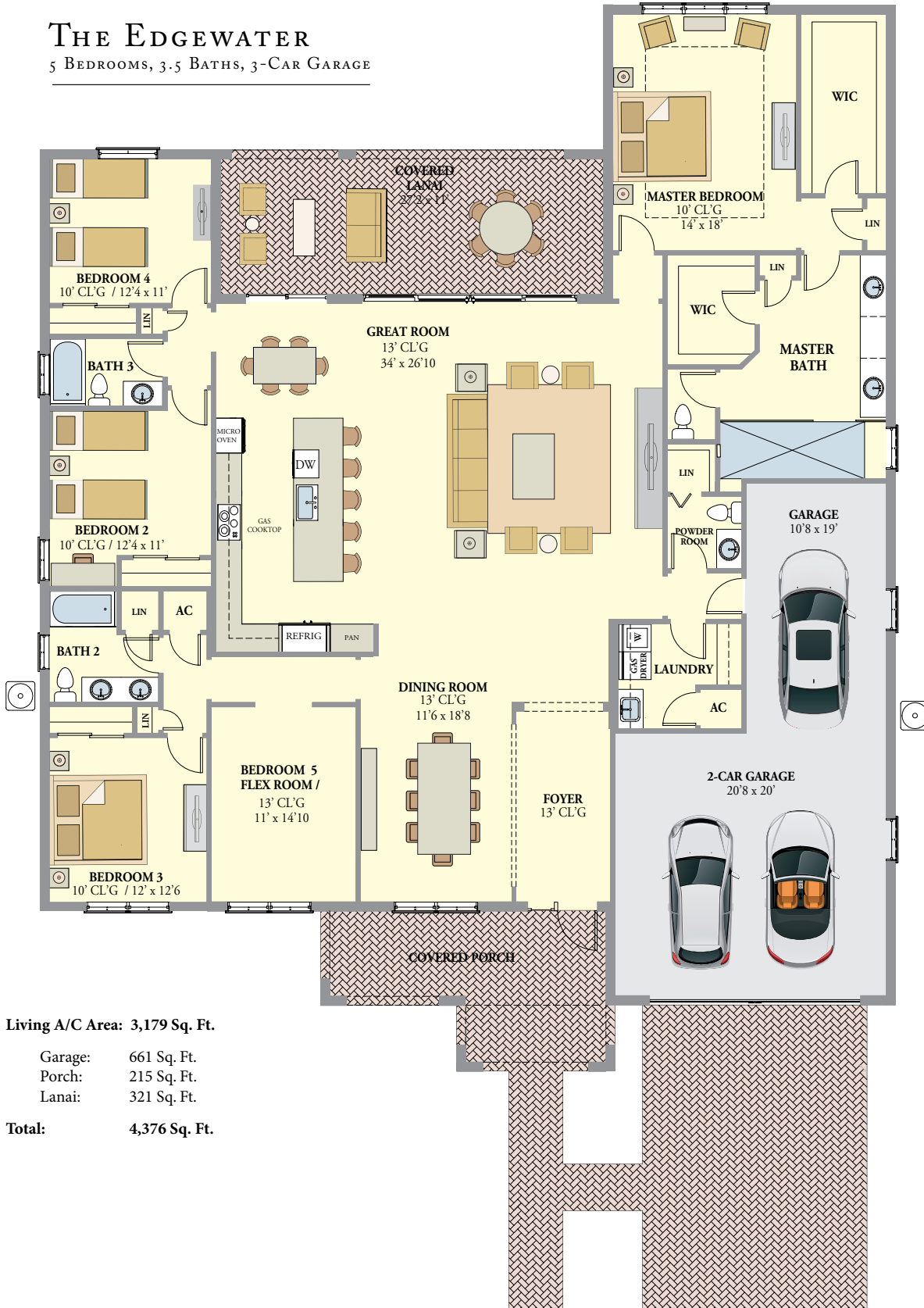


THE EDGEWATER

5 BEDROOMS, 3.5 BATHS, 3-CAR GARAGE



Living A/C Area: 3,179 Sq. Ft.

Garage: 661 Sq. Ft.

Porch: 215 Sq. Ft.

Lanai: 321 Sq. Ft.

Total: 4,376 Sq. Ft.

PLANS AND ELEVATIONS ARE ARTIST'S RENDERINGS ONLY. THEY MAY NOT ACCURATELY REPRESENT THE ACTUAL CONDITION OF A HOME AS CONSTRUCTED, AND MAY CONTAIN OPTIONS WHICH ARE NOT STANDARD ON ALL MODELS. KENCO RESERVES THE RIGHT TO MAKE CHANGES TO THESE FLOOR PLANS, PRICES, SPECIFICATIONS, DIMENSIONS, DESIGN AND ELEVATIONS WITHOUT PRIOR NOTICE. STATED DIMENSIONS AND SQUARE FOOTAGE ARE ESTIMATED AND SHOULD NOT BE USED AS REPRESENTATION OF THE HOME'S ACTUAL SIZE OR NET USABLE SQUARE FOOTAGE WHICH MAY BE LESS THAN THE ESTIMATED SQUARE FOOTAGE. ANY STATEMENT, VERBAL OR WRITTEN, REGARDING "UNDER ANY" OR "FINISHED AREA" OR ANY OTHER DESCRIPTION OR MEASURE OF THE SQUARE FOOTAGE, SIZE OF ANY HOME IS A SHORTHAND DESCRIPTION OF THE MANNER IN WHICH THE SQUARE FOOTAGE WAS ESTIMATED AND SHOULD NOT BE CONSTRUED TO INDICATE CERTAINITY. GARAGE OR BAY SIZES MAY VARY FROM HOME TO HOME AND MAY NOT ACCOMMODATE ALL VEHICLES. *LOT SIZES ARE APPROXIMATE AND REFER TO SALES ASSOCIATE FOR EXACT MEASUREMENTS. LAND USES PROXIMATE TO THE PROPERTY - THE FOLLOWING LAND USES ARE OR MAY IN THE FUTURE EXIST NEAR THE PROPERTY: COMMERCIAL EXCAVATION, ELECTRIC POWER GENERATION FACILITY, REGIONAL WASTEWATER MANAGEMENT RESERVOIRS AND FACILITIES, A LAW ENFORCEMENT TRAINING FACILITY, INCLUDING A SHOOTING RANGE, AN OLVATY PARK AND ACTIVE AGRICULTURAL USES.